

ENGINEERING COMPANY

DATA-SPM

DESIGN OF STEEL STRUCTURES

data-spm.com

We are open to dialogue. We create.

KEY VALUES AND BELIEFS

We value knowledge and experience that we have, but we try to improve every second. This particular allows us not only to achieve high-quality results, but always be ready to innovative construction solutions.

We monitor every trifle, because we believe that in our business there are no trifles.

We work in a quick manner and in due time.

We always remember that we are responsible for the lives of people, so we work exclusively under applicable building normative legal documents.

We are focused on making a profit from our work, while taking cost-effective solutions for customers.

We believe that each of us, as a personality and the organization as a whole, can achieve more.





DATA-SPM

WEBSITE: data-spm.com

ADDRESS: 07400, Ukraine, Kyiv reg., Brovary, Kyivska str., 221

CAPACITY

30+ engineers;

Steel detailing for 2500+ tons per month.

SERVICES:

1. Basic engineering:

- 3D planning (Tekla Structures);
- Structural analysis;
- General arrangement drawings;
- Material take – off.

2. Detail engineering in the scope of steel structures:

- Static calculation of joints;
- 3D modelling (Tekla Structures);
- Workshop documentation;
- DSTV files (nc-files) for machine tools;
- Lists (part, assembly, material, bolt, etc);
- Erection drawings.

MANAGEMENT

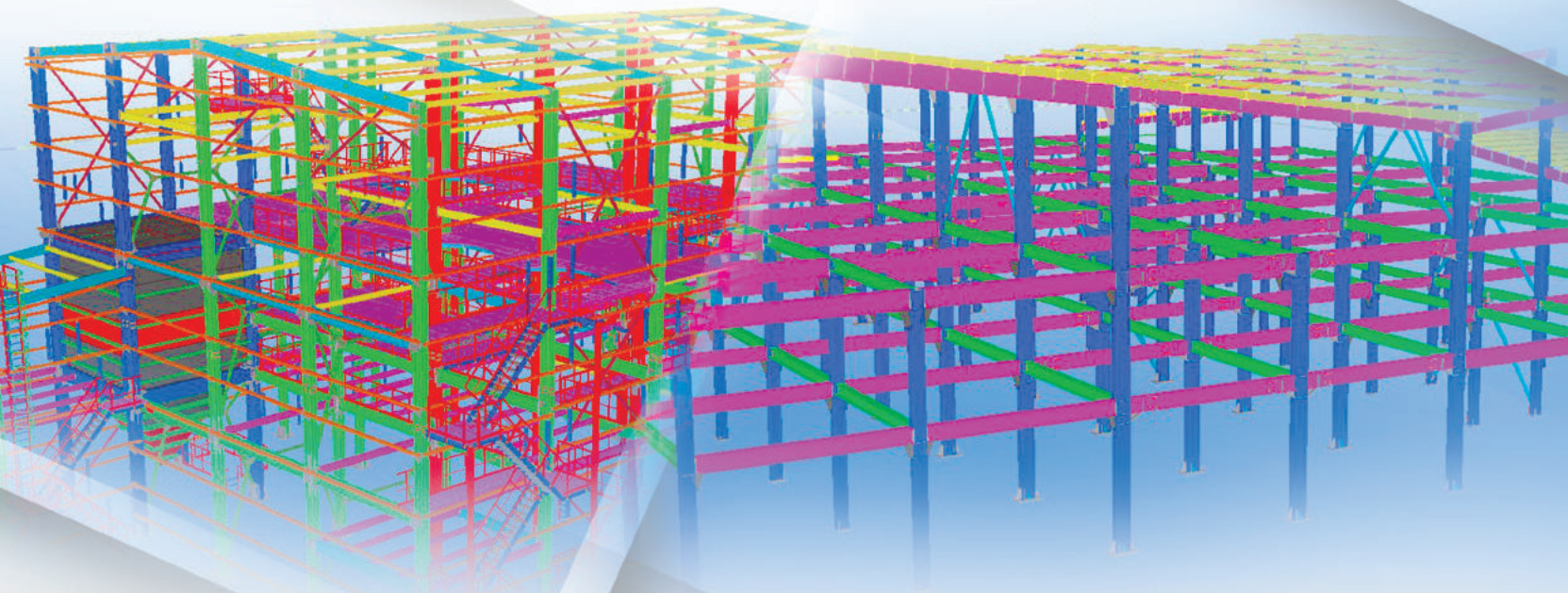
CEO Oleksandr Slavinskyi

Technical director Iurii Zubar

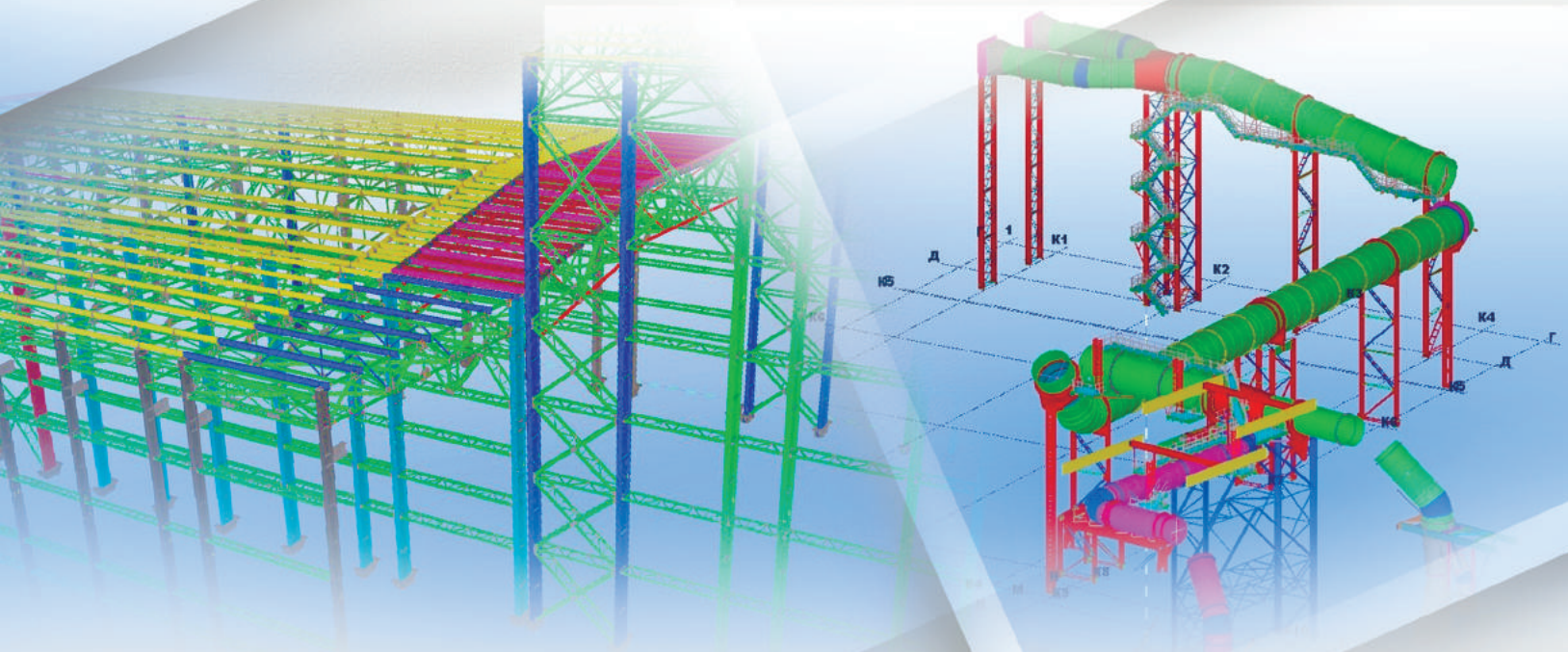
Deputy CEO Sergii Iushchenko

**QUANTITY OF THE COMPLETED PROJECTS
FOR STEEL STRUCTURES: 117208,3 tons.**

DATA-SPM



DATA-SPM



ADVANTAGES



EXPERIENCE

117208,3 tons of steel structures of buildings and facilities were fabricated and erected according to our drawings. Permanent practice on developing projects of steel structures for over 10 years. Participation in international projects. Work with foreign designers.



DESIGN PERIOD

The shortest possible time of design is provided by regular engineering & technical staff. Our capabilities allow us to execute projects of Steel Structures and Detailed Steel Structures for 2500 tons per month!



ASSEMBLABILITY

Applying Tekla Structures eliminates conflicts during erection and provides maximum assemblability of steel structures.

DATA-SPM



COMPETENCE

All of our Design Engineers have a university degree in construction with specialization «Industrial and Civil Engineering».

Applicants for the Design Engineer position in our company pass through rigorous recruitment and selection process at interviews. We hire only the best and most promising Design Engineers of Ukraine to join our team. All of our Design Engineers are constantly improving their knowledge with the aid of special theoretical and practical annual intracompany workshops on steel structures. Thanks to all this, we have formed the best team of Design Engineers.



QUALITY

To ensure better quality of issued design documentation, Project Implementation Internal Procedure (Quality System) has been introduced in our organization.

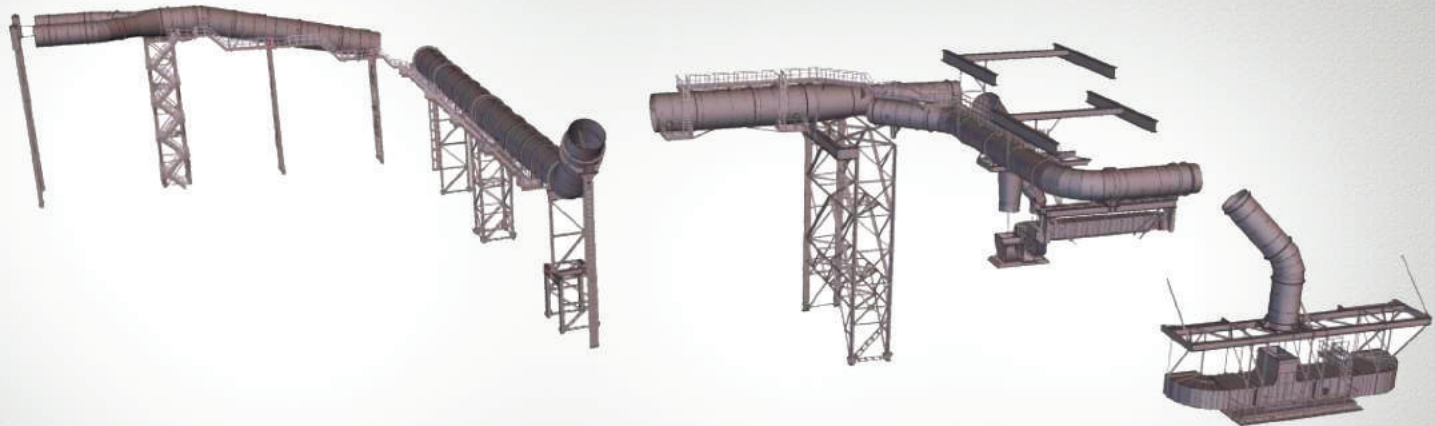
Each project passes through 3 levels of checking before release to production. In this case, production capabilities and all technical requirements of Clients to the execution of documentation are considered.



CLIENTS

A job well done is a satisfied Client! The largest players in steel construction market of Ukraine and Russia trust us with their projects.

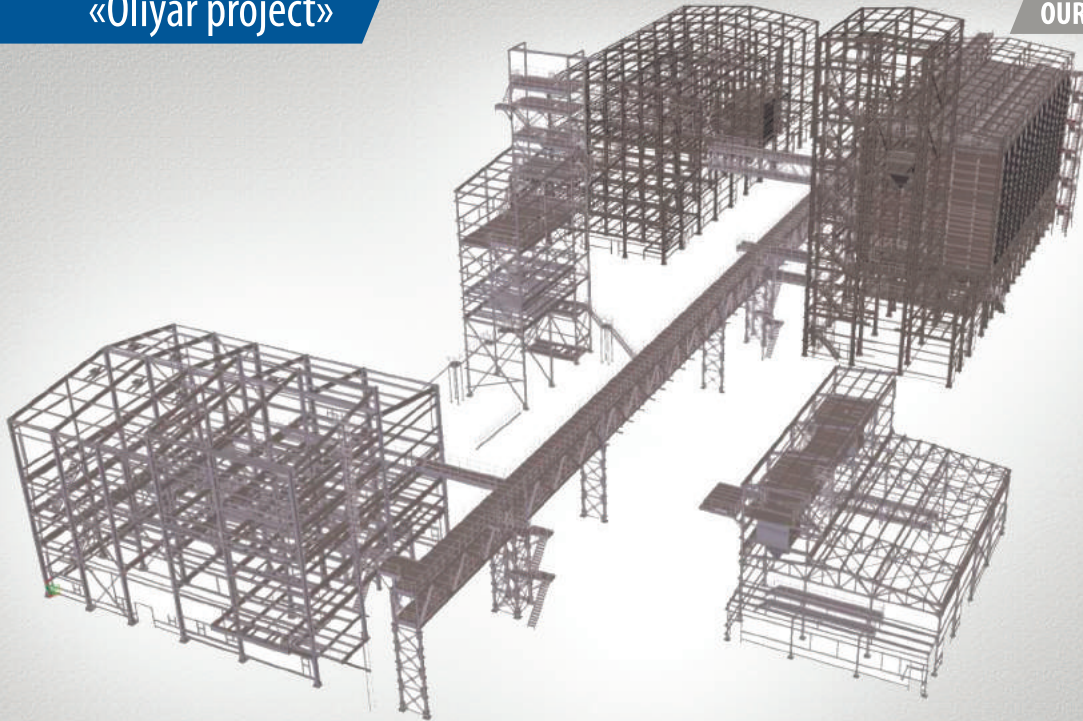
We will become an integral part of your team, the best assistant in all technical matters of your projects. Start working with us even today, and we'll remain your partner for years to come!



Overhaul of the 1st category with reconstruction. Aspiration system of OJSC
«Arselor Mittal Krivoy Rog» casthouse.
Weight of steel structures: 930 tons.

«Oliyar project»

OUR PROJECTS



Oilseed processing plant on the premises of privately hold company «Oliyar» in the village of Stavchany, Pustpmytinskiy district, Lvov region. Group of building and constructions.
Weight of steel structures: 1020 tons.



Design of car dealership on Zhytomyr highway, Kiev-Sviatoshyn district, Kiev region, Ukraine.
General Designer.

DATA-SPM

«EFRA project, LOTOS. Gdansk, Poland. 2900 TONS»

OUR PROJECTS



